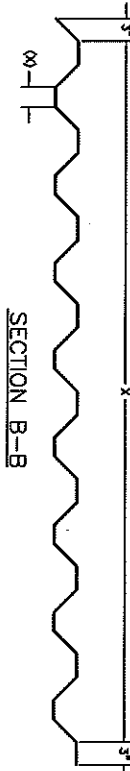
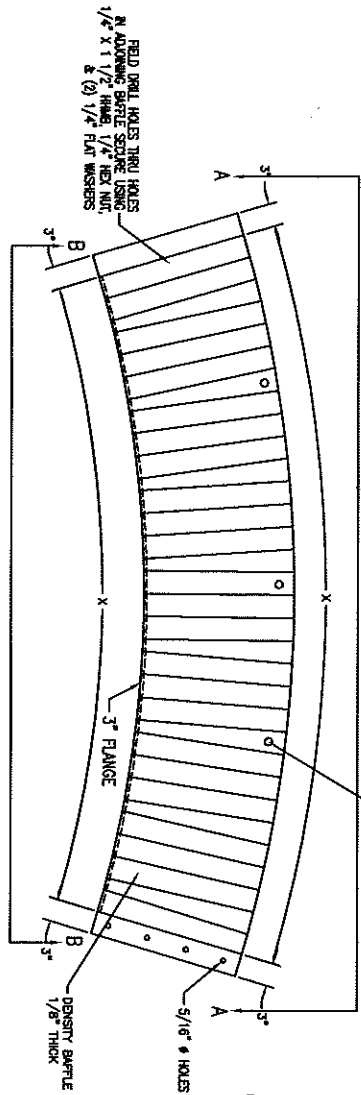
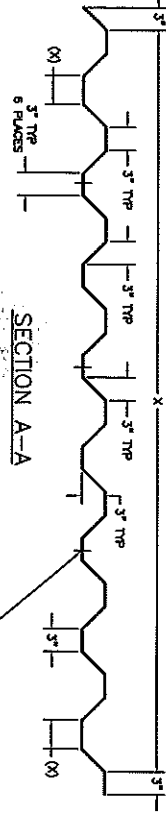
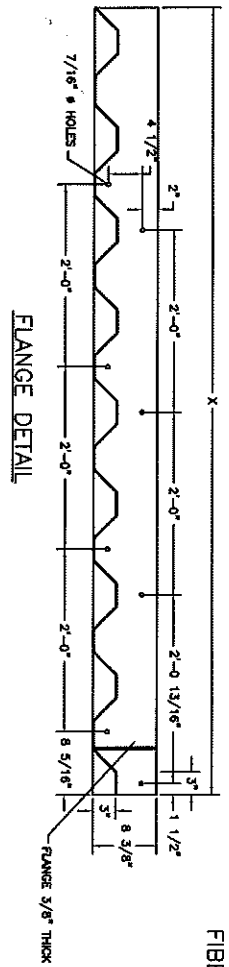
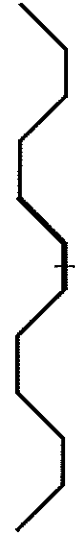


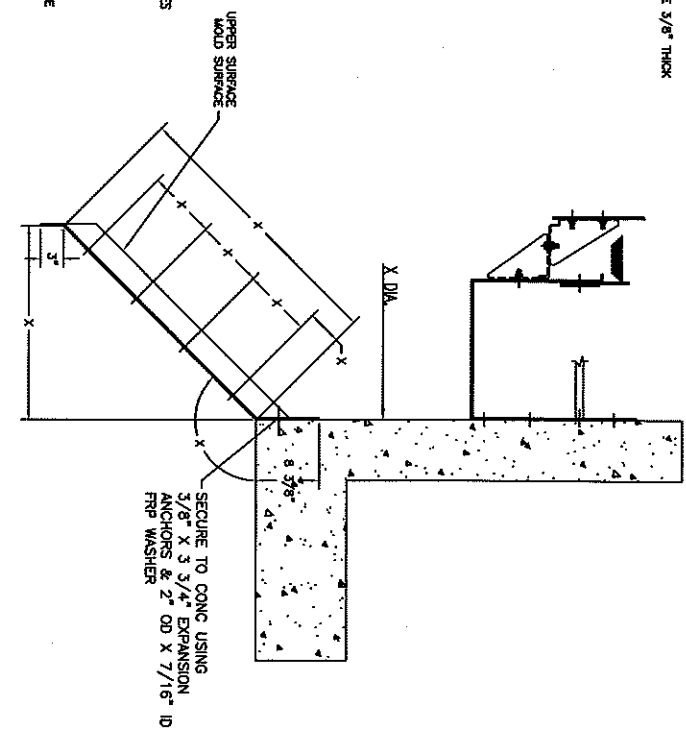
FIBERGLASS TO BE ISOPHTHALIC POLYESTER RESIN



DENSITY BAFFLE DETAIL



JOINT DETAIL



DENSITY BAFFLE MOUNTING DETAIL

WATER TREATMENT PRODUCTS COMPANY has no responsibility for the correct use of the product or the results of its use. WATRE has been selected to manufacture this product, the customer agrees to indemnify and hold WATRE harmless from and against all liability for claims, suits, judgments and expenses, unless the product as manufactured by WATRE does not conform to the approved design and specifications set or WATRE'S shop drawings approved by the customer.

X

NO.	REVISIONS	DATE

MFG WATER TREATMENT PRODUCTS COMPANY
 PHONE: (814) 438-3959 55 FOURTH AVE. UNION CITY, PA 16438 FAX: (814) 438-8538
 SCALE: TITLE: DENSITY BAFFLE MOUNTING DETAILS - ONE CLARIFIER REF.
 X

DIVISION: WATRE
 DRAWN BY: M. JOHNSON
 CHECKED: _____
 APPROVED: _____
 DATE: X

SHEET NO. X

Fig. 1

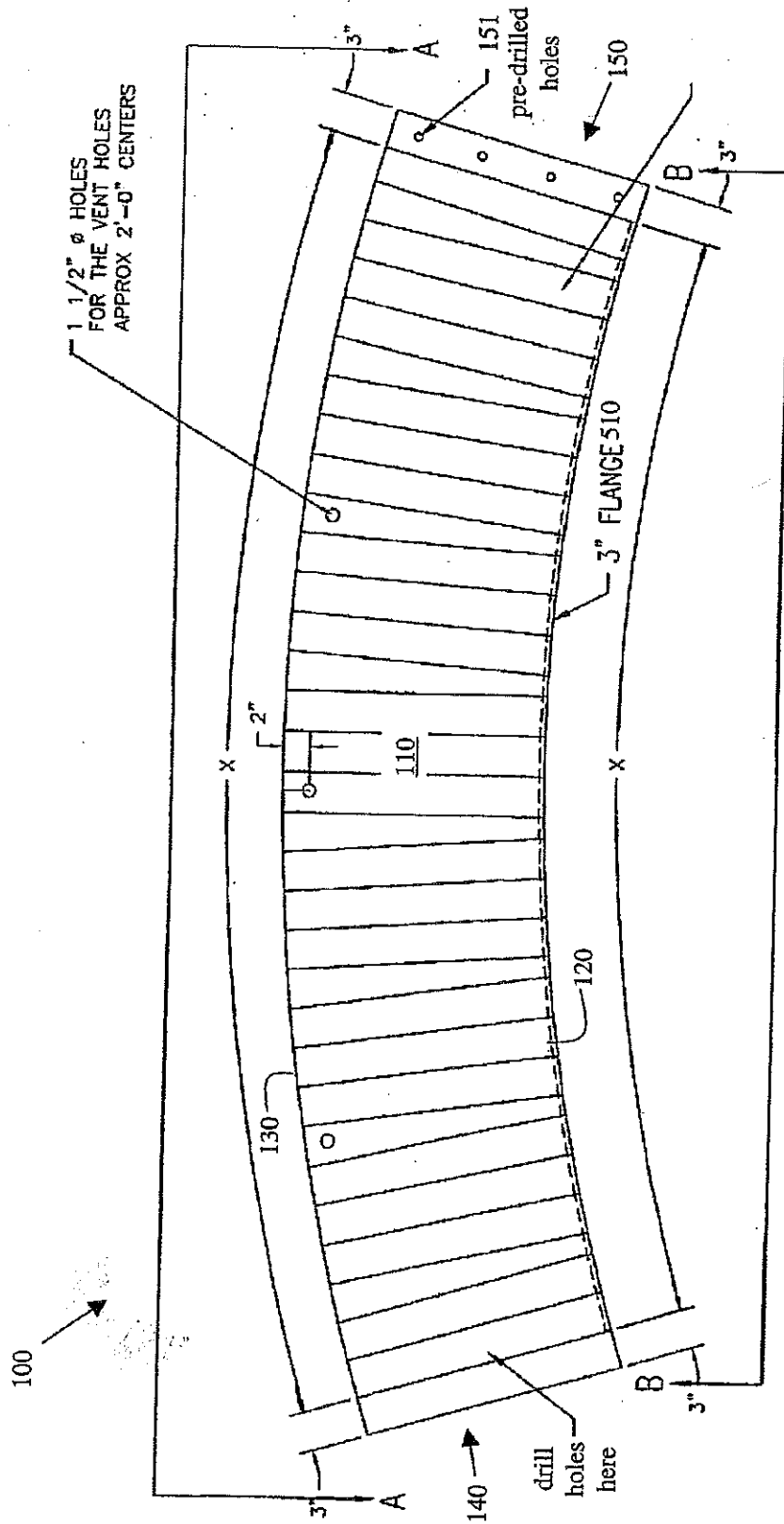
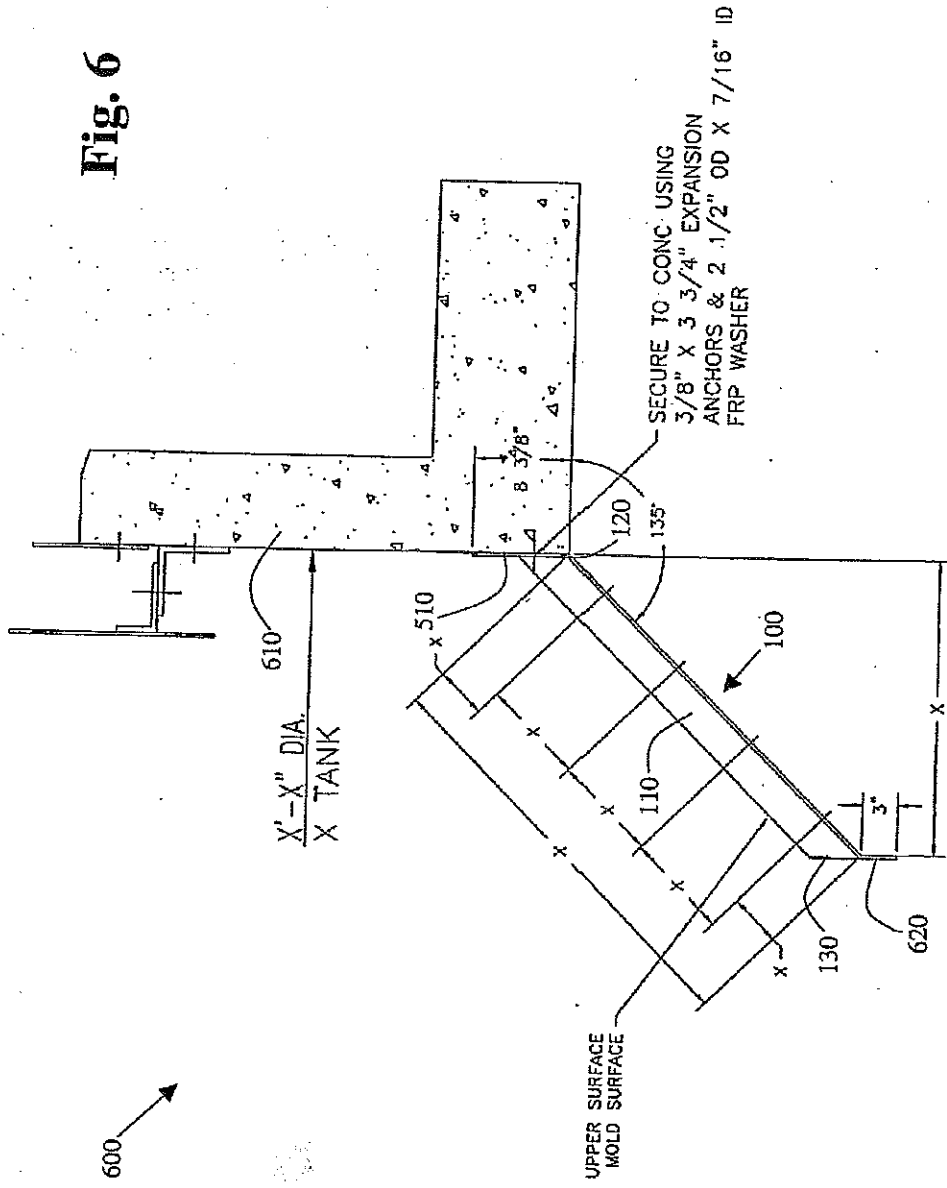


Fig. 6



DENSITY BAFFLE MOUNTING DETAIL